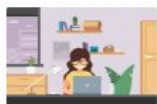




Take the GED Test Here

What's Needed to Take the Online GED Test



Computer, Webcam, Internet

You need a computer with webcam and reliable internet. Run a [system test](#) to make sure your computer meets the requirements.



Private Workspace

The room should have four walls, a closed door and no distractions.



Government-issued ID

We will verify your government-issued ID when you check-in for your test.



'Green' GED Ready Score

You must take a GED Ready practice test and score 'green' within the last 60 days for each subject in which you want to test online.

How can we help?

- 1 Ask us if you need help creating your GED.com account
- 2 We can provide a quiet space and device for your test.
- 3 Did you score "in the green" on your recent GED Ready test? **Let's pick a date for your test**
- 4 Arrive at 45 minutes before your scheduled test time
- 5 We'll help you log in to GED.com 30 minutes before your test appointment to launch your test

Hunterdon County

8 Bartles Corner Road, Suite 205
Flemington
Debbie (908) 237-5000

Somerset County

27 Warren Street, 2nd floor
Somerville
Mike (908) 541-5780